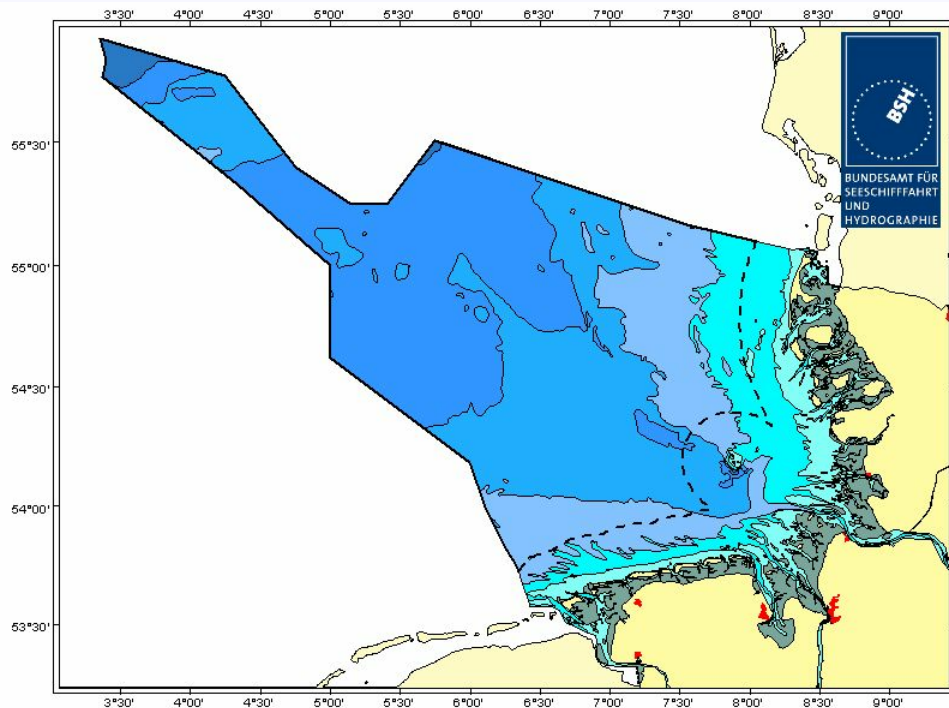




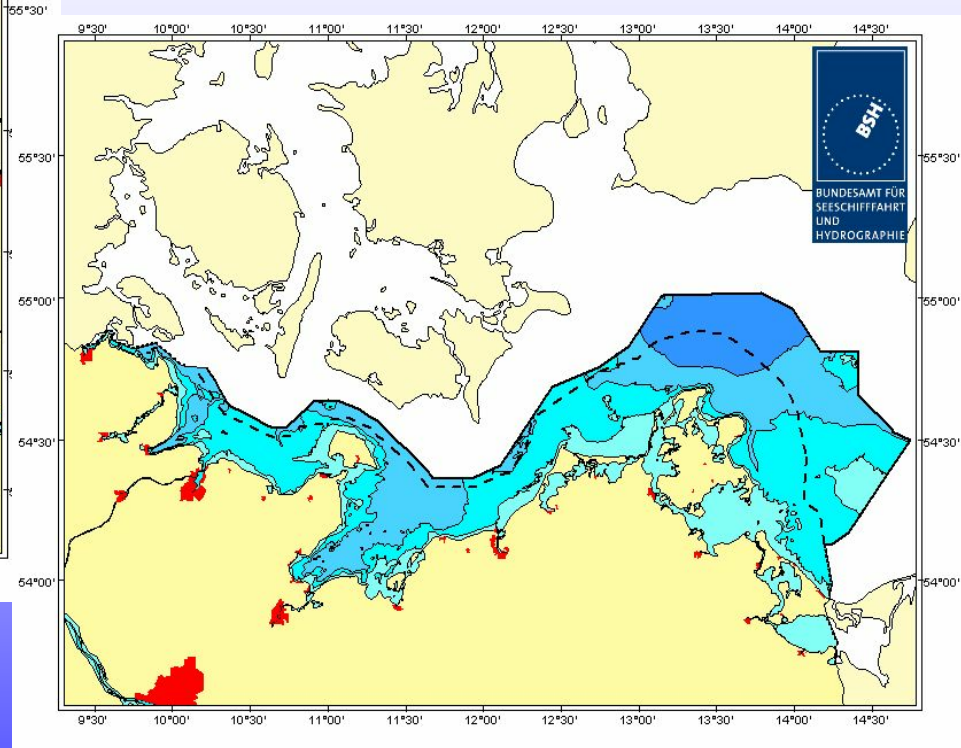
HAVARIEKOMMANDO

Central Command for Maritime Emergencies Germany

Geographical area of responsibility



North Sea



Baltic Sea

- Agreement to set up a CCME (HKV)
- Agreement on marine pollution response (BLV-SUB)
- Agreement on fire fighting at sea
- Agreement on setting up a Maritime Safety Centre (MSZ)

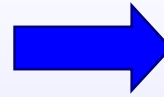
The Federal Gouvernement and the Coastal States share the costs of all response actions taken

HB	HH	MV	Nds.	SH	Federal Gouvernement
2,5%	6%	8,5%	18%	15%	50%

Central Command for Maritime Emergencies



Daily Routine Organisation



Emergency Organisation

Maritime Emergency Reporting and Assessment Centre

24 hours on duty, operated by Officials from Water Police and Waterways & Shipping Authority

Maritime Pollution Response
High Sea Section,
emergency towing

Maritime Pollution Response
Coastal Section

Fire Fighting, Rescue and
Medical Care Section

Press/Media Section

Staff Unit 2 Display of
Situation

Staff Unit 1
Personnel, Support and Logistic

Staff Unit 3
Operational Control

Staff Unit 4
Press/Media

When does CCME take action ?

- In case a severe maritime emergency situation has occurred **(reactive)**
- In case a severe emergency situation is likely to occur **(preventive)**
- In case one of CCME's partners requests CCME to take over **(supportive)**

Definition of a severe emergency situation „oil“

Offshore
More than 10m water depth

50 cbm Öl

Onshore
Less than 10m water depth

10 cbm Öl

Shipping lanes

5 cbm Öl

Shoreline

**3km with significant
coverage**

Sensitive areas

**Sealbanks
Musslebanks
Breedingplaces of birds
Naturereserves
Touristic areas**

Aerial Surveillance - Do228LM

- **Wide-range sensor**
(Line-scanner: ± 30 km)
 - **S**ide **L**ooking **A**irborne **R**adar (SLAR)
- **Narrow-range sensors**
(Line-scanner: ca. ± 250 m)
 - **I**nfrared/**U**ltraviolet Scanner (IR/UV)
 - **M**icrowa**w**ave-**R**adiometer (MWR)
 - **L**aser-**F**luoro **S**ensor (LFS)
- **F**orward **L**ooking **I**nfrared Camera (FLIR)
- **S**atellite **C**ommunication via Inmarsat



24h - response vessels



Oil spill response vessels



Oil spill response vessels



Oil spill response vessels



Oil spill response vessels



Oil spill response vessels



Oil spill response equipment



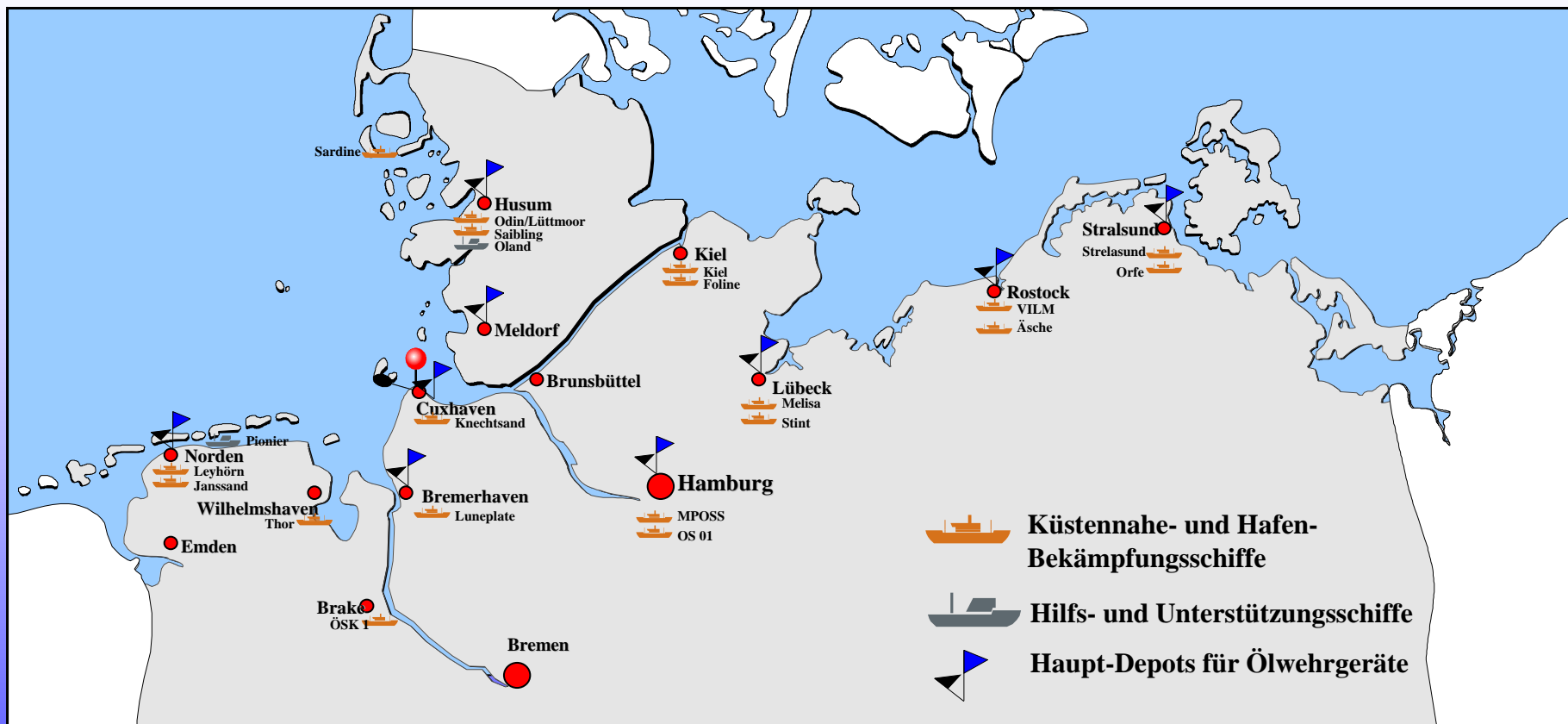
Oil spill response equipment



Oil spill response equipment



Location of response vessels/equipment

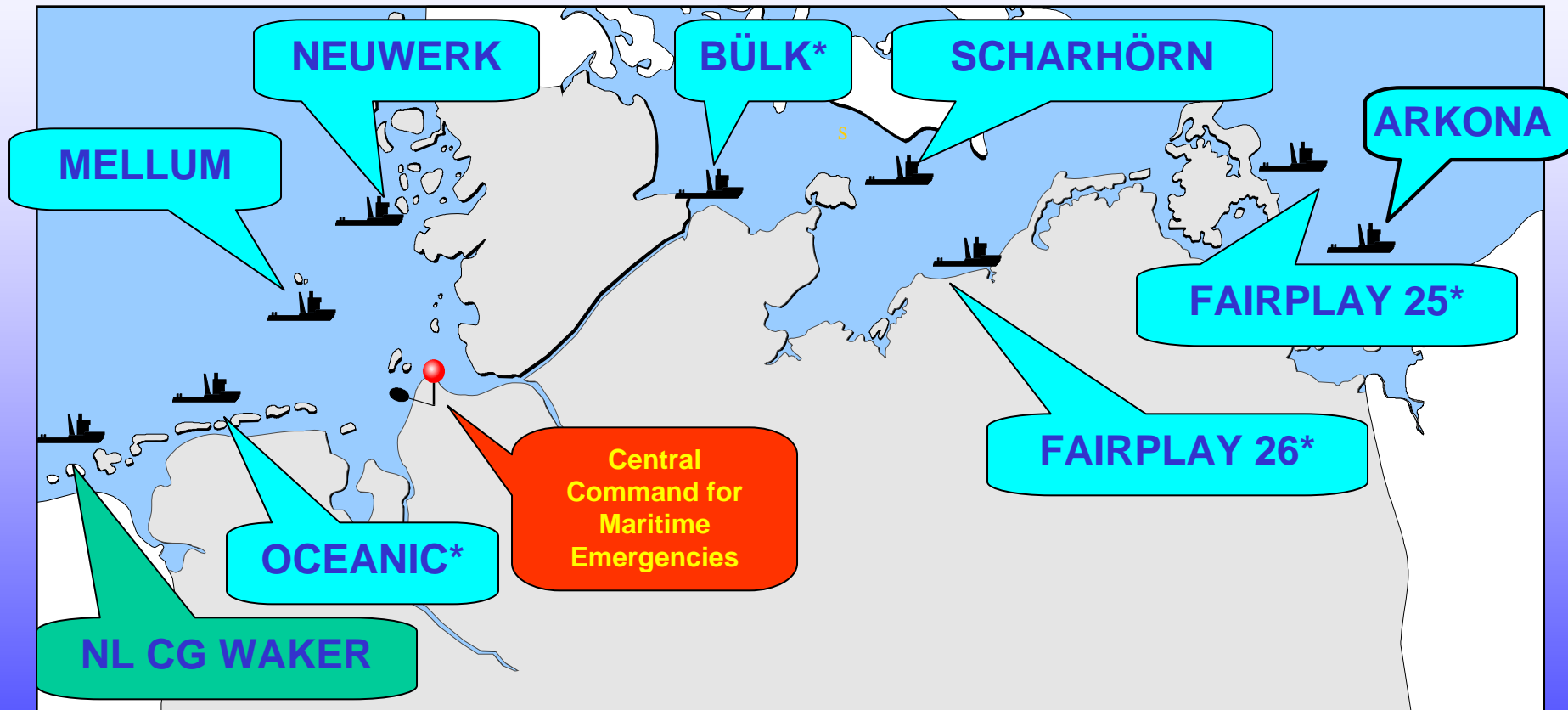


7 high sea vessels

12 near shore vessels

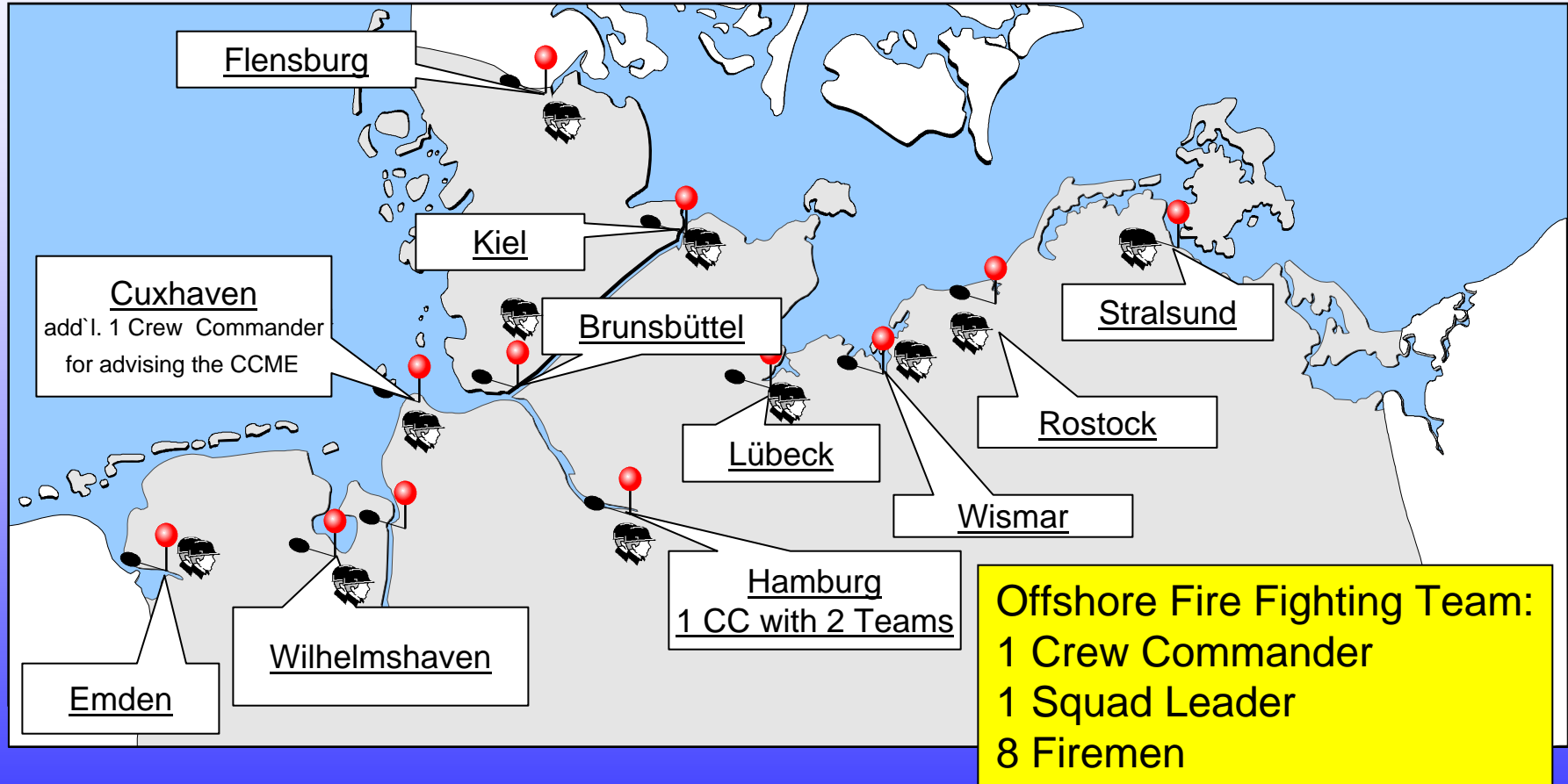
Huge amount of shoreline cleaning equipment

Location of emergency towing vessels

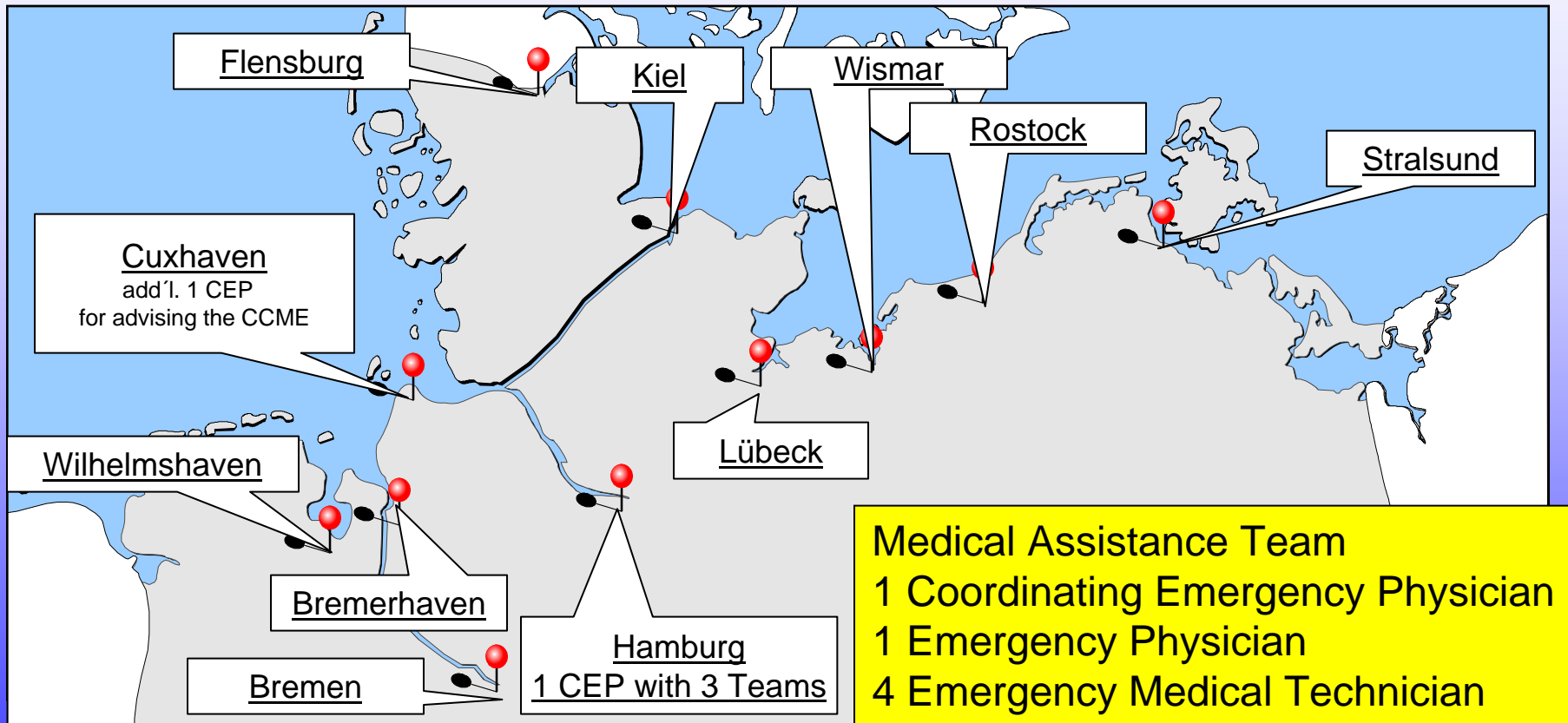


* = chartered

Location offshore fire fighting teams



Location medical assistance teams



IT - Contingency planning system - VPS

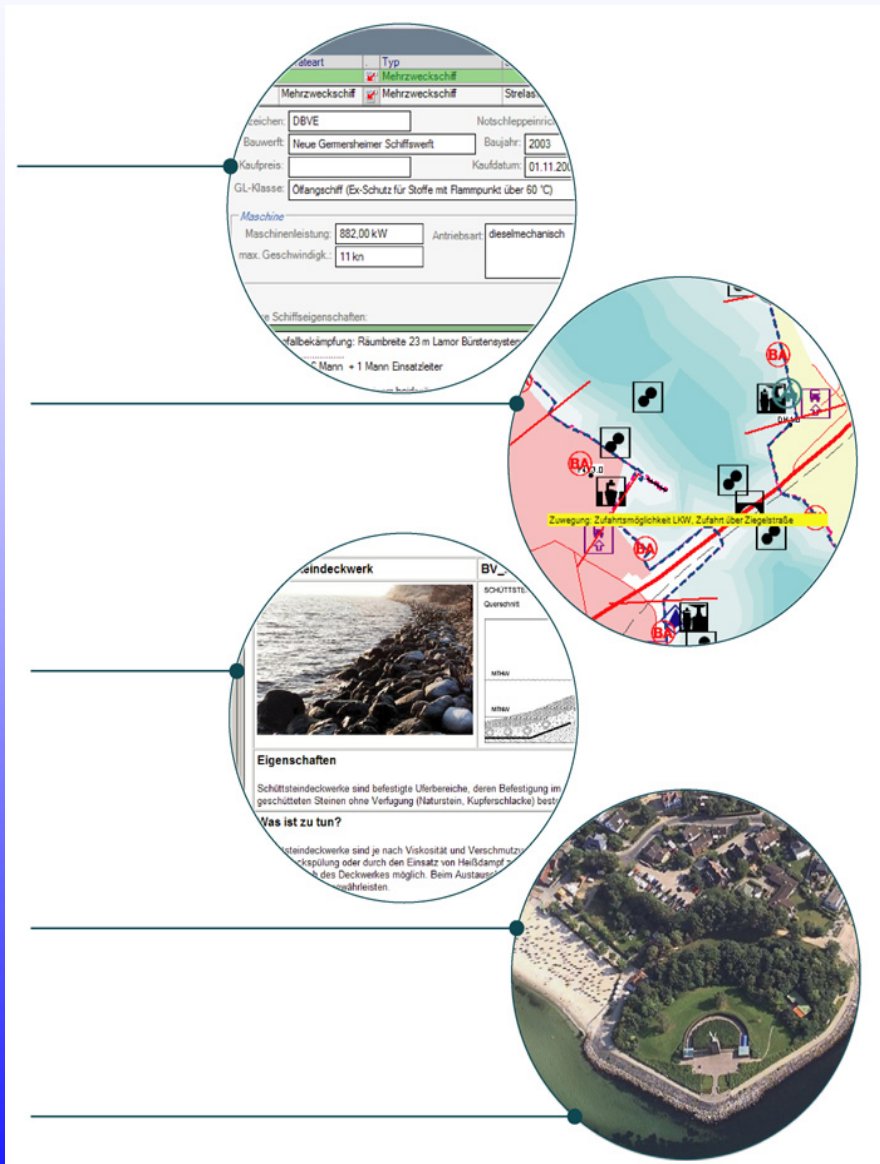
Alpha-numerical data

Geo-data

Text data

Photo/image data

Video data



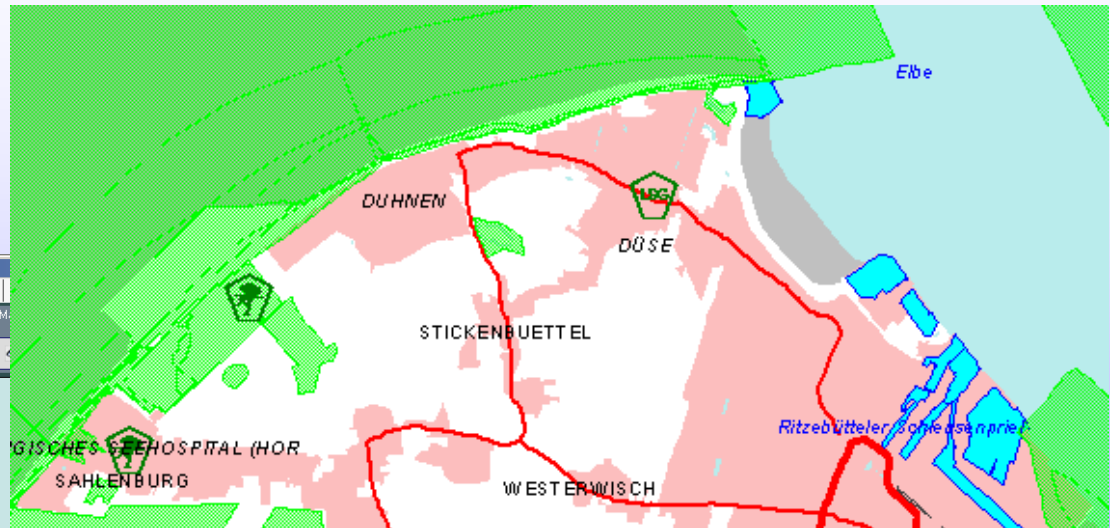
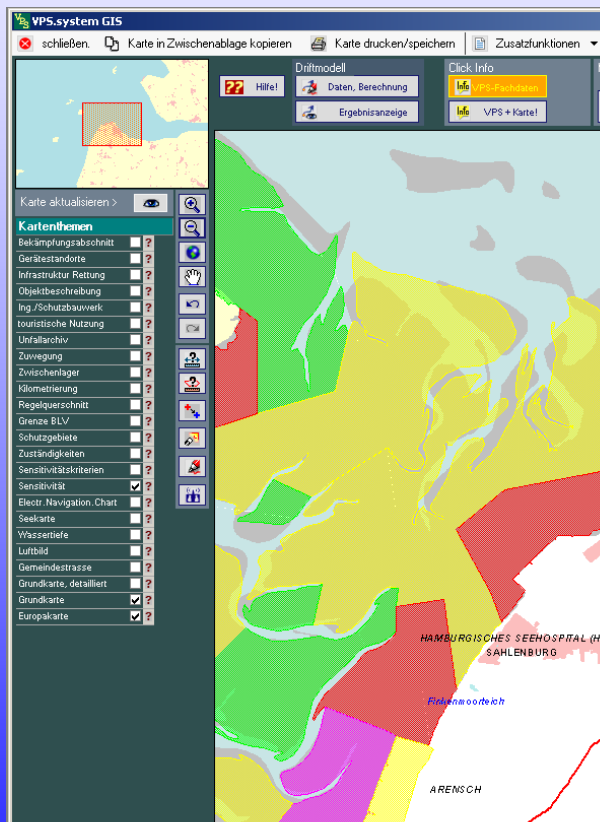
IT - Contingency planning system - VPS



Protected Areas



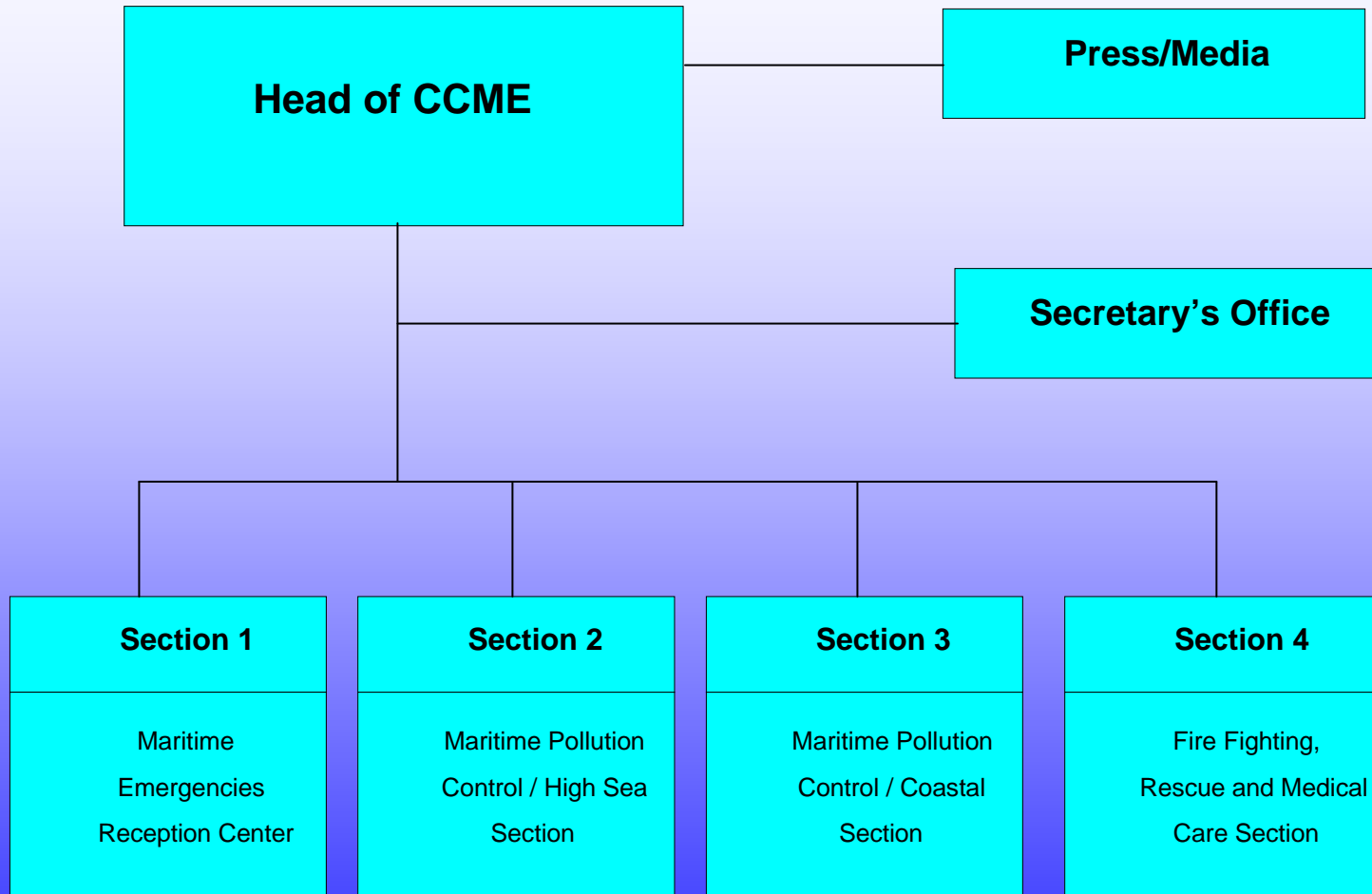
Sensitivity Mapping



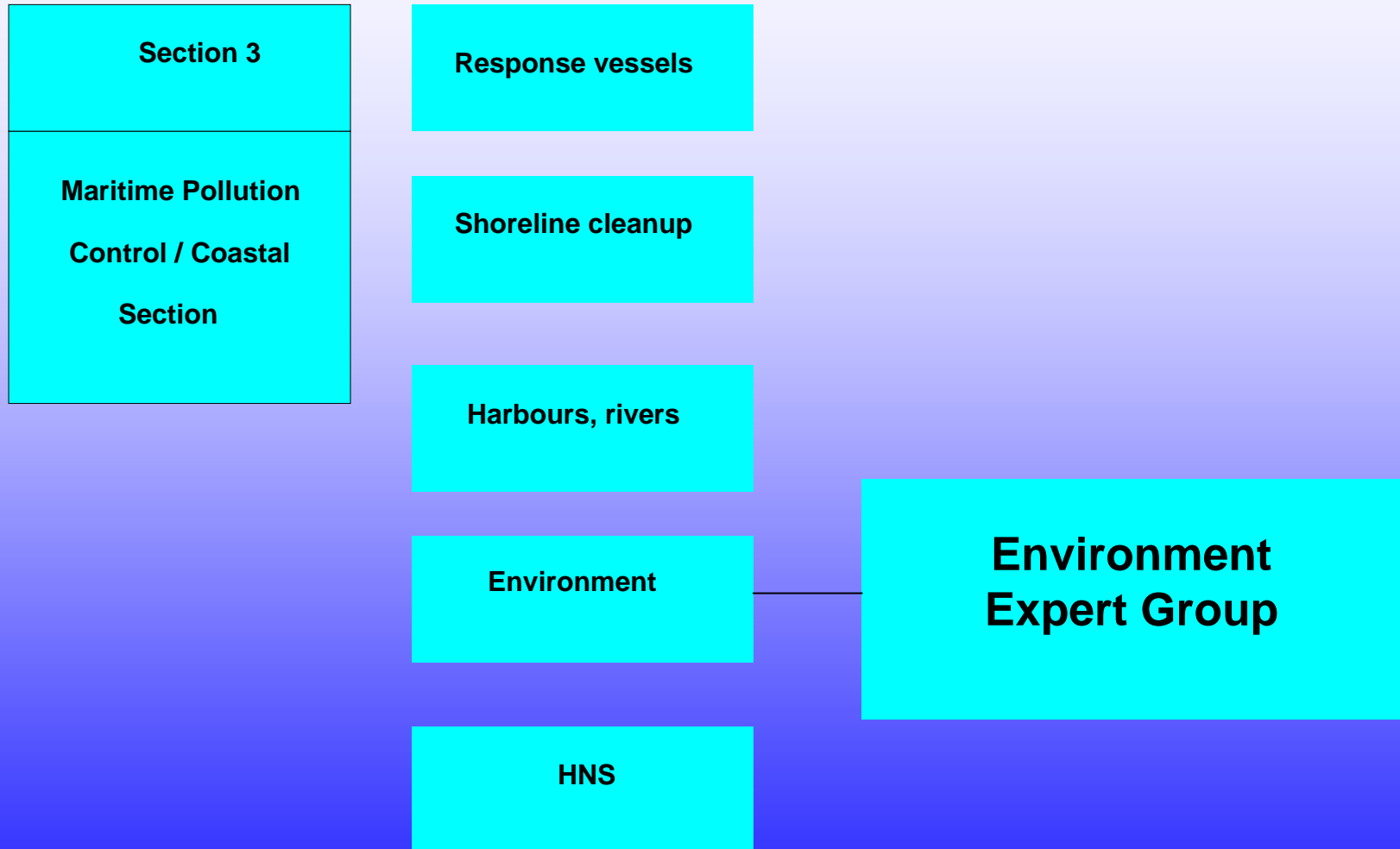
Protected areas and
natural monuments

Sensitivity in relation to
oil pollutions

Environmental expertise



Environmental expertise



Federal Ministry for Environment, Nature

Alfred Wegener Institute for Polar and Marine Research

GKSS Research Centre for Coastal Research

National Park Authority for Wadden Sea

Agency for Coastal Defence and National Park

Federal Institute for Risk Assessment

Federal Maritime and Hydrographic Agency

State Agency for Environment

Federal Institute of Hydrology

Wadden Sea Secretariat

Thank you for your attention

